



**tm** TM Master

Smarter ship operations  
with TM Master

[ocean.tg.com/fleet-management](https://ocean.tg.com/fleet-management)

Powered by

**TERO  
MARINE**





Align departments and teams, reduce errors, and make smarter decisions.

## Redefining ship management efficiency

---

**Intelligent, data-driven workflows and insights to maximise the efficient management of your fleet.**

Increase operational efficiency, reduce OPEX, and strengthen performance.

Ship management solutions that reduce the pressure on your teams – enabling them to deliver in an ever-changing, safety-critical landscape.



## TM Master

**Our flagship TM Master suite puts user experience first in a modular approach to fleet management software.**

**Enabling ship managers to benefit from a system configured to perfectly fit business needs and enable safe, compliant, and efficient operations.**

Consisting of four core modules for maintenance, procurement, Quality & Environment and Crewing, TM Master fleet enables safer, more efficient, and more profitable ship management.

**Align departments and teams, reduce errors, and make smarter decisions.**

### TM Maintenance

Our user friendly, comprehensive, and flexible solution for planning and managing maintenance tasks across your fleet.

### TM Crew

Manage crew aboard and onshore. Assign crew, manage their records & certificates, and communicate procedures to ensure the safety and compliance of your personnel throughout operations.

### TM Procurement

Intelligent automations and intuitive user interfaces that provide full visibility and control over procurement cycles

### TM Quality & Environment

Intuitive processes and record keeping tools for logging, reporting, and helping reduce the undesired incidents across your fleet.



# TM Maintenance

Our user friendly, comprehensive, and flexible solution for planning and managing maintenance tasks across your fleet.

### Fewer unplanned maintenance tasks

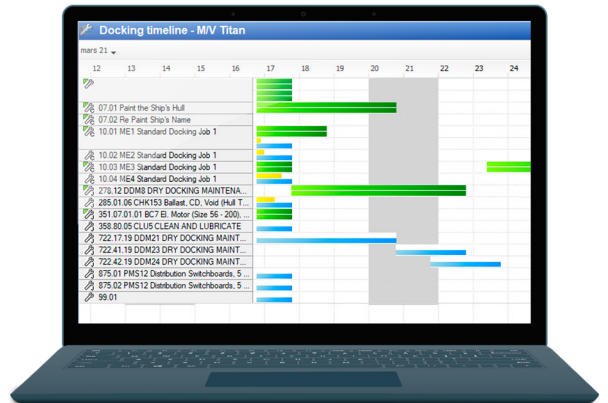
Combining data from ship sensors, reports from engineers, and trend analysis, you can identify potential problems before they arise, and schedule preventative maintenance jobs.

### Reduce inventory and overheads

Easily view current spare part and consumables levels, as well as future levels with planned jobs factored in, to identify potential shortages or overstocks.

### Improve visibility over dry-docking projects

Tools for planning, tender comparison, and procurement that give you full control ahead of, and complete visibility during, all dry-docking jobs.



### Features include:

- + Scheduled maintenance and project planner
- + Date, counter, or condition- based maintenance
- + Risk analysis & work permits
- + Consumption of spare parts forecasting
- + Dry-Dock project planning, costing, and tracking
- + Tracking of movable assets
- + Dive ship module

# TM Crew

Manage crew aboard and onshore. Assign crew, manage their records & certificates, and communicate procedures to ensure the safety and compliance of your personnel throughout operations.

### Have full crewing visibility

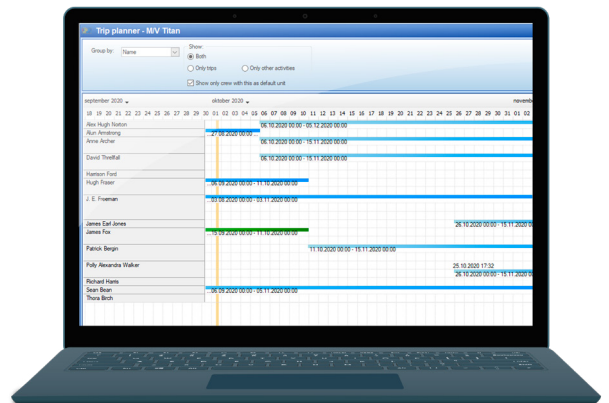
Easily plan work and rest hours, with a clear view of who is available to be on-shift at any given time. With automatic calculations of work/rest hours, you can proactively coordinate with the master should they be unable to stay within plan.

### Trust what you see

Your sensitive is secure against manipulation, with changes reported in tamperproof historical logs, providing confidence that the information you see is a true representation of the facts.

### Keep records aligned

TM Crew can integrate with any third-party software, such as ERP and payroll systems, making it easier to align crewing management, payroll and contracts data between ship and shore.



### Features include:

- + Rotation planning
- + Crew and passenger lists
- + Accommodation management
- + Role and crew qualification matching
- + Tamper-proof work-rest hour reporting

## TM Procurement

Intelligent automations and intuitive user interfaces that provide full visibility and control over procurement cycles.

### Unclutter your procurement processes

Rule-based automations eliminate approval bottlenecks without compromising record keeping or financial controls, freeing up your purchasing teams to handle critical tasks

### Be confident that you are getting the best deal

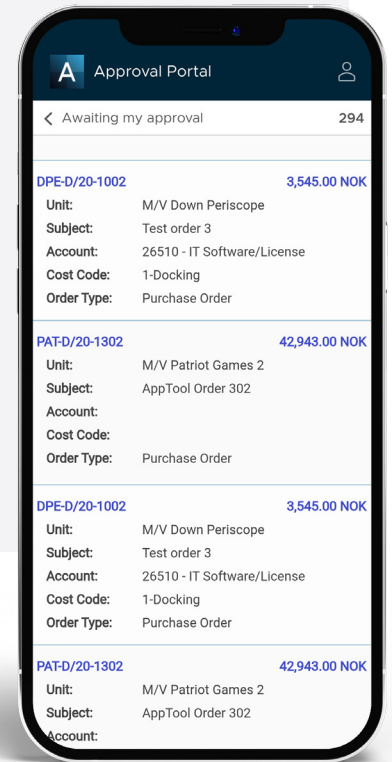
Tools and processes that facilitate an agile procurement strategy, saving you time and money without compromising quality.

### Let the system handle your admin

Automated three-way matching of quotation, purchase order and invoice reduce administrative burdens and deliver a clear audit connection between teams

### Features include:

- + Fleetwide order status overview
- + One-click RFQ distribution to multiple vendors
- + Multi-currency price comparison
- + Invoice scanning and automated matching
- + Streamlined approval processes
- + Supplier evaluation
- + e-commerce integration



## TM Quality & Environment

Intuitive processes and record keeping tools for logging, reporting, and helping reduce the undesired incidents across your fleet.

### Reduce risks and improve processes

Get a clear picture of any observations made aboard your vessels and use this information to inform your maintenance or training plan and ensure issues are quickly resolved, with remedial actions clearly documented.

### Evidence compliance

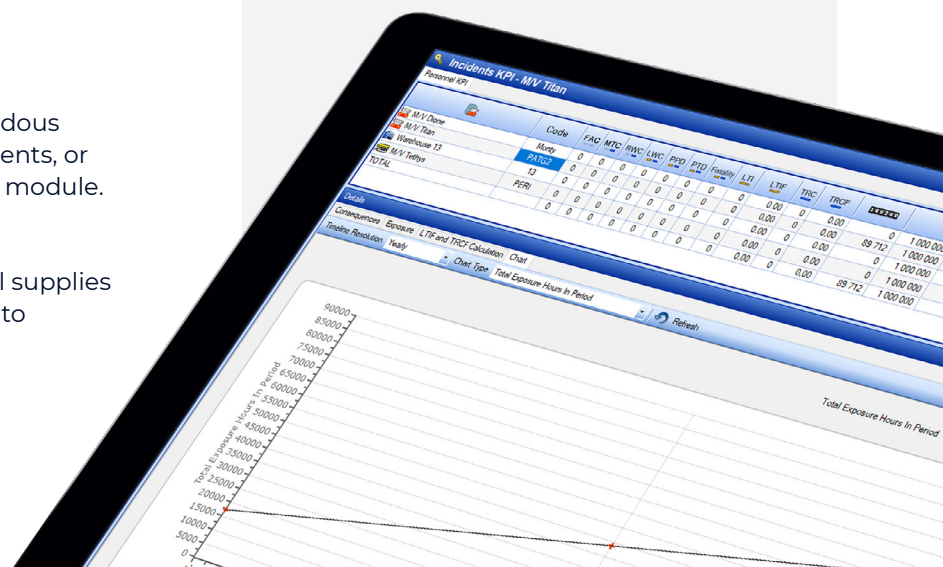
Easily maintain a complete overview of hazardous materials used in the ship structure, components, or spares with our Index of Hazardous Materials module.

### Equip teams with the supplies they need

Easily monitor the levels condition of medical supplies and equipment aboard, see when they need to be replenished or replaced, and ensure your crews always have access to what they need.

### Features include:

- + Index of hazardous material
- + Medical equipment management
- + Observation and incident reporting
- + Inspections and audit logging
- + Certificate management





We are a full service provider who are continuously investing in our product development together with our customers.

#### We also offer:

- + 24/7 Customer support
- + Consultancy
- + Integrations
- + Bespoke change development to meet customer specific needs
- + Database building/Database conversion
- + Training

## TM Insights

TM Insights allows you to capitalise on the data in your business, bringing together information from all aspects of your operations, enabling you to see trends, anomalies, and potential issues.

#### Uncover hidden opportunities

Easily see where under maintenance is costing more in repairs and consumption and compare the performance of sister vessels and action changes to make savings and efficiency gains.

#### Work from a single point of truth

Connecting your data through TM Insights gives you and your teams the same accurate and actionable information, helping ensure that everyone pulls in the same direction.

#### Become an expert in your data

Easily go from high-level reports into the details, and forecast broken down by the team. From there, managers can drill into team performance to set their teams up for success.

*“The conversion process has been completed according to plan. This has enabled us to get all the Subsea 7 vessels on one common platform within reasonable time. We could not have accomplished this without Tero Marine’s help and expertise.”*

**Subsea 7**

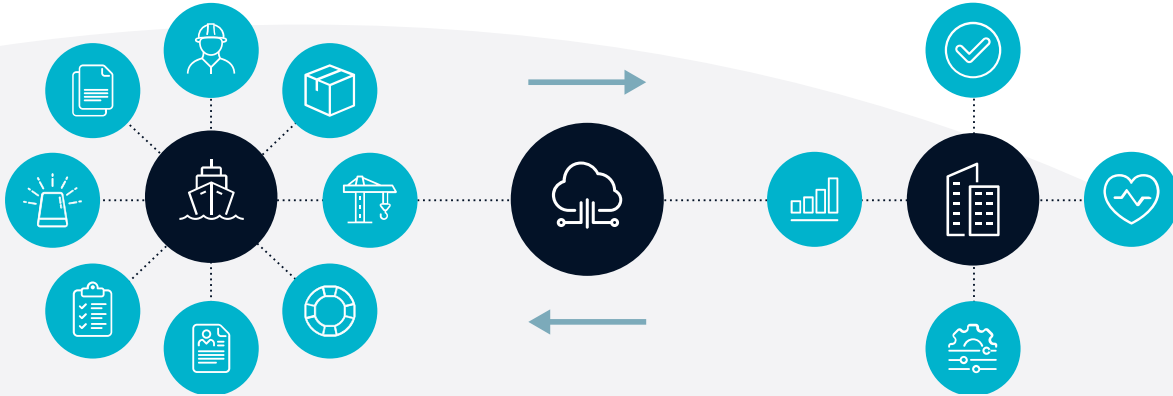
*“Never fails to impress.”*

**Tidewater**

*“Best product on the market.”*

**Knutsen OAS Tankers**

# Stay connected and updated



By installing TM Master both on the vessel and in the office, everyone involved in fleet operations will have access to vital, and always updated, information.

A fully integrated software solution will enable you to save time and resources when planning and executing your operations. Integration with third-party solutions also means that TM Master can be the most important information hub in your fleet management.

## International customers with TM Master licences





#### TERO MARINE OFFICES

##### BERGEN, NORWAY

Tero Marine Head Office  
Kanalveien 105 A  
5068 Bergen  
Norway

+47 55 90 43 00  
admin@teromarine.com

##### NEWCASTLE, UK

Tero Marine UK Limited  
40 Apex Business Village,  
Annitsford, Northumberland,  
NE23 7BF

+44 1670 46 80 80  
uk.admin@teromarine.com

##### SINGAPORE

Tero Marine Asia Pacific Pte Ltd  
#17-02A Keck Seng Tower  
133 Cecil Street  
Singapore 069535

+65 65 13 25 29  
+65 65 13 25 25  
sales.sg@teromarine.com

#### TERO MARINE REPRESENTATIVES

##### RIO, BRAZIL

Maritime & Offshore Partners  
Av. Rio Branco  
89/802  
Centro - RJ  
Brazil

+55 (21) 3239 4850  
brazil@mopartners.global

##### NEW ZEALAND

Terotek (NZ) Limited  
P.O. Box 305 556  
Triton Plaza  
Auckland 0757  
New Zealand

+64 9 972 1488  
enquiries@terotek.co.nz

##### RUSSIA

Marine Solutions LLC  
Office 3, Shmidta Str. 43  
Murmansk 183038  
Russia

+7 911 332 27 77  
info@tmmmasterrussia.ru

Visit [oceanng.com/fleet-management](https://oceanng.com/fleet-management) to find out more.